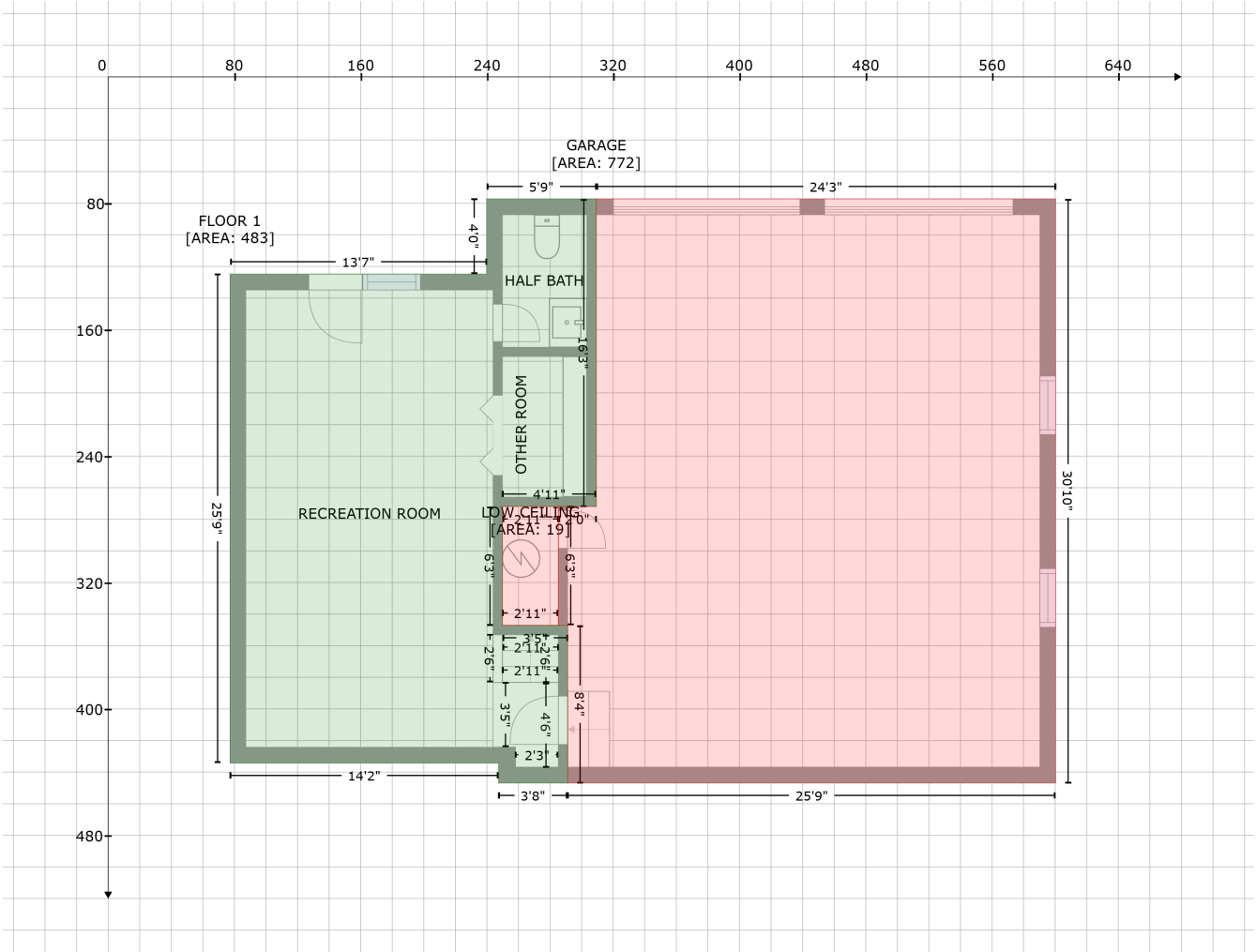


200 Foxfield Ln, Matthews, NC, United States

Gross Living Area: 2700 sq. ft



Space	Area (sq. ft)	Calculation
FLOOR 1 (Living area)	483	Coordinate Polygon Area Algorithm using inches $-((309.2 + 309.2) * (77.2 - 271.9) + (309.2 + 249.8) * (271.9 - 271.9) + (249.8 + 249.8) * (271.9 - 347.1) + (249.8 + 291.1) * (347.1 - 347.1) + (291.1 + 291.1) * (347.1 - 446.9) + (291.1 + 247.4) * (446.9 - 446.9) + (247.4 + 247.4) * (446.9 - 434.3) + (247.4 + 77.2) * (434.3 - 434.3) + (77.2 + 77.2) * (434.3 - 124.9) + (77.2 + 239.8) * (124.9 - 124.9) + (239.8 + 239.8) * (124.9 - 77.2) + (239.8 + 309.2) * (77.2 - 77.2)) * 0.5 * 0.00694$
GARAGE (Non-living area)	772	$-((600.3 + 600.3) * (77.2 - 446.9) + (600.3 + 291.1) * (446.9 - 446.9) + (291.1 + 291.1) * (446.9 - 347.1) + (291.1 + 285.2) * (347.1 - 347.1) + (285.2 + 285.2) * (347.1 - 271.9) + (285.2 + 309.2) * (271.9 - 271.9) + (309.2 + 309.2) * (271.9 - 77.2) + (309.2 + 600.3) * (77.2 - 77.2)) * 0.5 * 0.00694$
LOW CEILING (Non-living area)	19	$-((285.2 + 285.2) * (271.9 - 347.1) + (285.2 + 249.8) * (347.1 - 347.1) + (249.8 + 249.8) * (347.1 - 271.9) + (249.8 + 285.2) * (271.9 - 271.9)) * 0.5 * 0.00694$

200 Foxfield Ln, Matthews, NC, United States

Gross Living Area: 2700 sq. ft



Space	Area (sq. ft)	Calculation
FLOOR 2 (Living area)	1292	Coordinate Polygon Area Algorithm using inches $-\left((394.4 + 394.4) * (297.9 - 316.1) + (394.4 + 647.1) * (316.1 - 316.1) + (647.1 + 647.1) * (316.1 - 685.7) + (647.1 + 286.5) * (685.7 - 685.7) + (286.5 + 286.5) * (685.7 - 673.1) + (286.5 + 113.7) * (673.1 - 673.1) + (113.7 + 113.7) * (673.1 - 363.7) + (113.7 + 220.6) * (363.7 - 363.7) + (220.6 + 220.6) * (363.7 - 395.4) + (220.6 + 290.6) * (395.4 - 395.4) + (290.6 + 290.6) * (395.4 - 367.8) + (290.6 + 286.5) * (367.8 - 363.7) + (286.5 + 286.5) * (363.7 - 316.1) + (286.5 + 307.7) * (316.1 - 316.1) + (307.7 + 307.7) * (316.1 - 297.9) + (307.7 + 394.4) * (297.9 - 297.9)\right) * 0.5 * 0.00694$
DECK	241	$-\left((208.2 + 230.9) * (151.4 - 178.4) + (230.9 + 241.5) * (178.4 - 178.4) + (241.5 + 241.6) * (178.4 - 178.4) + (241.6 + 241.6) * (178.4 - 178.4) + (241.6 + 241.5) * (178.4 - 151.4) + (241.5 + 208.2) * (151.4 - 178.4)\right) * 0.5 * 0.00694$

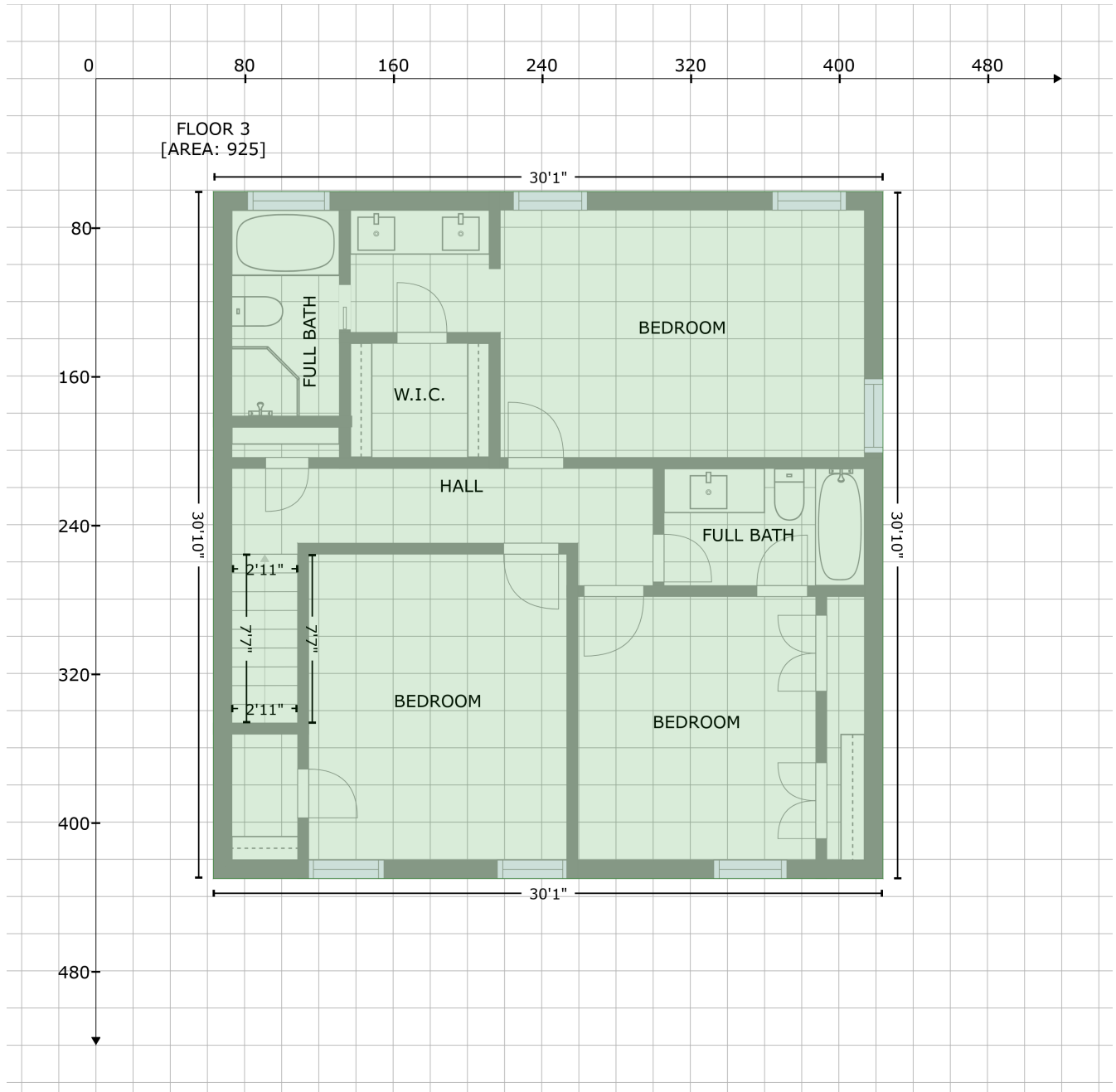
200 Foxfield Ln, Matthews, NC, United States

Gross Living Area: 2700 sq. ft

Space	Area (sq. ft)	Calculation <small>Coordinate Polygon Area Algorithm using inches</small>
(Non-living area)		$172.7 + (241.6 + 280.7) * (172.7 - 172.3) + (280.7 + 280.8) * (172.3 - 316.4) + (280.8 + 286.5) * (316.4 - 316.4) + (286.5 + 286.5) * (316.4 - 363.7) + (286.5 + 265.3) * (363.7 - 363.7) + (265.3 + 265.3) * (363.7 - 373.7) + (265.3 + 290.6) * (373.7 - 373.7) + (290.6 + 290.6) * (373.7 - 395.4) + (290.6 + 220.6) * (395.4 - 395.4) + (220.6 + 220.6) * (395.4 - 373.7) + (220.6 + 239.1) * (373.7 - 373.7) + (239.1 + 239.1) * (373.7 - 363.7) + (239.1 + 119.6) * (363.7 - 363.7) + (119.6 + 119.6) * (363.7 - 335.5) + (119.6 + 118.1) * (335.5 - 335.3) + (118.1 + 118.1) * (335.3 - 301.3) + (118.1 + 119.7) * (301.3 - 301.7) + (119.7 + 119.7) * (301.7 - 172.2) + (119.7 + 142.7) * (172.2 - 151.4) + (142.7 + 208.2) * (151.4 - 151.4) * 0.5 * 0.00694$
FIREPLACE (Non-living area)	8	$-((113.7 + 113.7) * (532.7 - 591.6) + (113.7 + 95.4) * (591.6 - 591.6) + (95.4 + 95.4) * (591.6 - 532.7) + (95.4 + 113.7) * (532.7 - 532.7)) * 0.5 * 0.00694$

200 Foxfield Ln, Matthews, NC, United States

Gross Living Area: 2700 sq. ft



Space	Area (sq. ft)	Calculation <small>Coordinate Polygon Area Algorithm using inches</small>
FLOOR 3 (Living area)	925	$-((423.7 + 423.7) * (60.8 - 430.4) + (423.7 + 63.2) * (430.4 - 430.4) + (63.2 + 63.2) * (430.4 - 60.8) + (63.2 + 423.7) * (60.8 - 60.8)) * 0.5 * 0.00694$