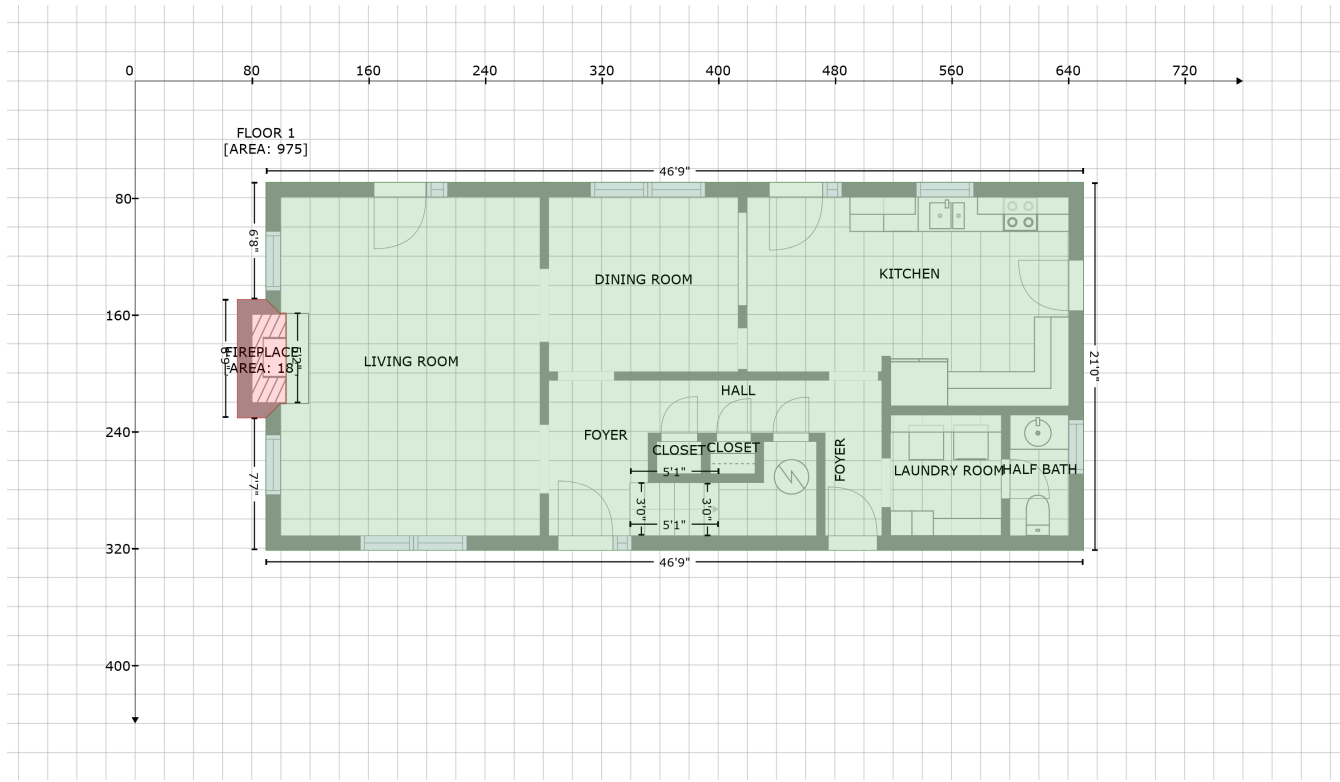


# 2020 Blackbeard Drive, Oriental, NC, United States

Gross Living Area: 1957 sq. ft



Space	Area (sq. ft)	Calculation <small>Coordinate Polygon Area Algorithm using inches</small>
FLOOR 1 (Living area)	975	$-((650.6 + 650.6) * (69.4 - 321.5) + (650.6 + 89.7) * (321.5 - 321.5) + (89.7 + 89.7) * (321.5 - 230.8) + (89.7 + 99.7) * (230.8 - 220.8) + (99.7 + 103.5) * (220.8 - 220.8) + (103.5 + 103.5) * (220.8 - 159) + (103.5 + 99.7) * (159 - 159) + (99.7 + 99.7) * (159 - 159.6) + (99.7 + 89.7) * (159.6 - 149.6) + (89.7 + 89.7) * (149.6 - 69.4) + (89.7 + 650.6) * (69.4 - 69.4)) * 0.5 * 0.00694$
FIREPLACE (Non-living area)	18	$-((89.7 + 99.7) * (149.6 - 159.6) + (99.7 + 99.7) * (159.6 - 159) + (99.7 + 103.5) * (159 - 159) + (103.5 + 103.5) * (159 - 220.8) + (103.5 + 99.7) * (220.8 - 220.8) + (99.7 + 89.7) * (220.8 - 230.8) + (89.7 + 70) * (230.8 - 230.8) + (70 + 70) * (230.8 - 149.6) + (70 + 89.7) * (149.6 - 149.6)) * 0.5 * 0.00694$

# 2020 Blackbeard Drive, Oriental, NC, United States

Gross Living Area: 1957 sq. ft



## Space

## Area (sq. ft)

## Calculation Coordinate Polygon Area Algorithm using inches

FLOOR 2  
(Living area)

982

$-\left(\left(630.6 + 630.6\right) * \left(69.4 - 321.5\right) + \left(630.6 + 69.7\right) * \left(321.5 - 321.5\right) + \left(69.7 + 69.7\right) * \left(321.5 - 69.4\right) + \left(69.7 + 630.6\right) * \left(69.4 - 69.4\right)\right) * 0.5 * 0.00694$